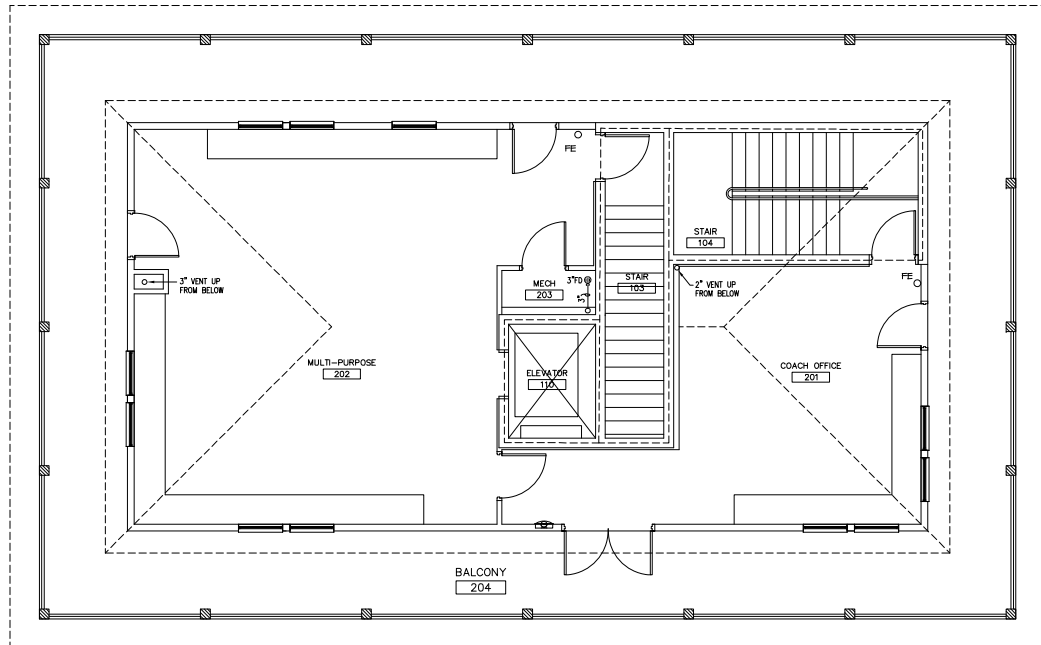


1  
P1.1  
PLUMBING RESTROOM BUILDING FIRST FLOOR WASTE PIPING PLAN  
SCALE: 1/4" = 1'-0"

**KEY NOTES:**  
 1. TURN SUMP PUMP DISCHARGE UP IN JANITOR CLOSET AND TERMINATE OVER JANITOR SINK.

**GENERAL NOTES:**  
 1. ALL FLOOR DRAINS SHALL BE PROVIDED WITH TRAP GUARDS.



2  
P1.1  
PLUMBING RESTROOM BUILDING SECOND FLOOR WASTE PIPING PLAN  
SCALE: 1/4" = 1'-0"

**JENKINS ENGINEERING, INC.**  
 1500 W. WALTON BEACH BLVD., SUITE 120  
 FT. WALTON BEACH, FLORIDA 32578  
 PHONE: 850.377.0448  
 FAX: 850.377.2460  
 JENKINS@JECOM.COM  
 C.O.A. NO. 9927



NO.	DATE	REVISION

**FT WALTON BEACH PARK**  
 HOLLYWOOD BLVD.  
 FT. WALTON BEACH • FLORIDA

**JOB:**  
 DATE: 02/29/23  
 DESIGNED: TJM  
 DRAWN: TJM

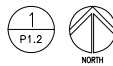
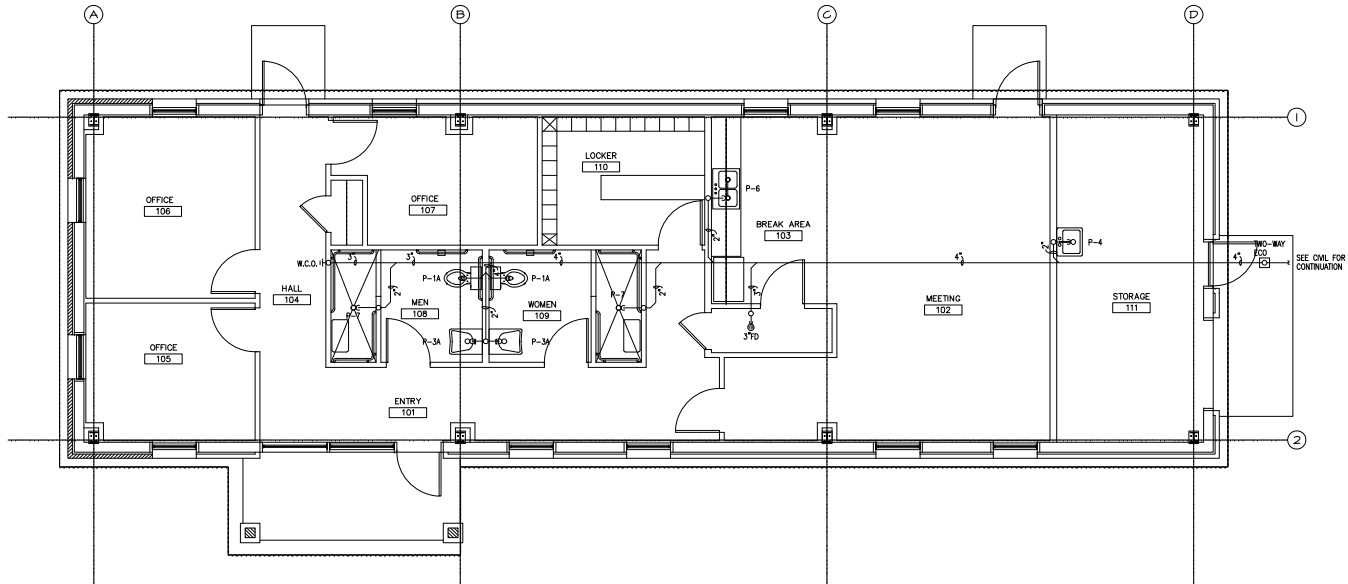
**DRAWING NUMBER**  
**SHEET NUMBER**  
 P1.1

**H.M. YONGE & ASSOCIATES, INC.**  
 CONSULTING ENGINEERS, EST. 1988  
 51 EAST GREGORY STREET  
 FORT WALTON BEACH, FLORIDA 32542  
 PHONE: 850.434-2661

CERTIFICATION OF REGISTRATION NO. 0034  
 MECHANICAL ENGINEER GREGORY M. YONGE, P.E., FLORIDA REG. NO. 30288  
 MECHANICAL ENGINEER TERRY W. FITZELL, P.E., FLORIDA REG. NO. 49792  
 ELECTRICAL ENGINEER ARNOLD V. YAROSEK, P.E., FLORIDA REG. NO. 7635

H. M. YONGE AND ASSOC. JOB# 21-174

THIS DRAWING IS THE PROPERTY OF JENKINS ENGINEERING, INC. AND IS NOT TO BE REPRODUCED WITHOUT EXPRESSED WRITTEN CONSENT



PLUMBING RECREATION BUILDING WASTE PIPING PLAN  
SCALE: 1/4" = 1'-0"

GENERAL NOTES:

1. ALL FLOOR DRAINS SHALL BE PROVIDED WITH TRAP GUMDS.



**JENKINS ENGINEERING, INC.**  
 1200 W. STATE ROAD 100, SUITE 120  
 DEERFIELD BEACH, FLORIDA 33441  
 PHONE: 888.637.0448  
 FAX: 888.637.2460  
 JENKINS.COM  
 C.O.A. NO. 9927



NO.	DATE	REVISION

**FT WALTON BEACH PARK**  
 HOLLYWOOD BLVD.  
 FT. WALTON BEACH • FLORIDA

JOB: FT WALTON BEACH BEACH ENGINEERING ORIGINAL SERVICE  
 DATE: 02/29/23  
 DESIGNED: TJM  
 DRAWN: TJM  
 DRAWING NUMBER: P1.2  
 SHEET NUMBER: P1.2

THIS DRAWING HAS BEEN REPRODUCED AND SEALED BY TRACY L. MITCHELL, P.E. ON FEBRUARY 23, 2024.

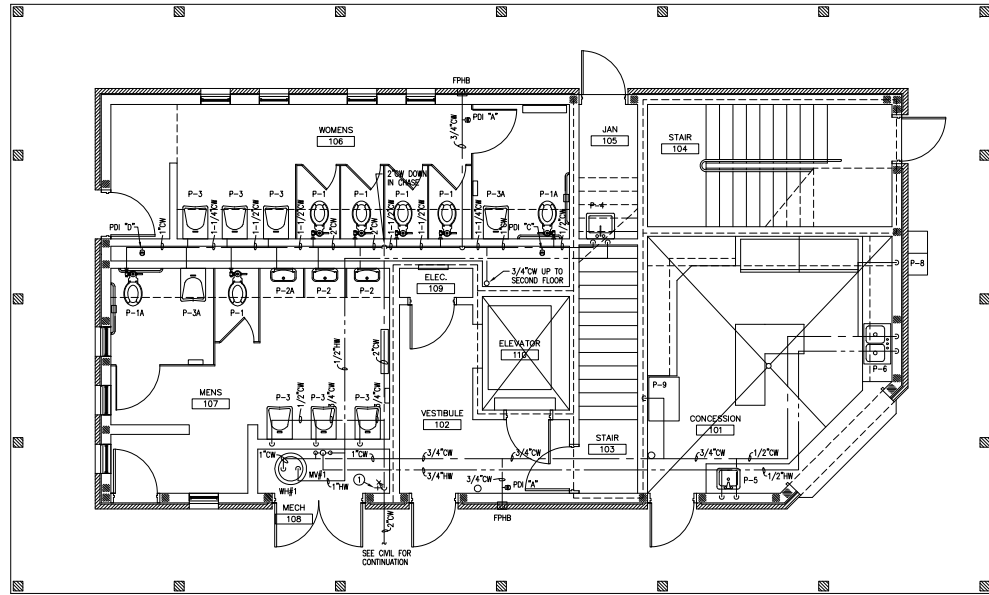
PRINTED COPIES OF THIS DOCUMENT ARE NOT CONSIDERED SEALED AND SEALED AND THE SIGNATURE MUST BE VERIFIED ON ANY ELECTRONIC COPIES.

**H.M. YONGE & ASSOCIATES, INC.**  
 CONSULTING ENGINEERS • EST. 1988  
 51 EAST GREGORY STREET  
 FORT WALTON BEACH, FLORIDA 32042  
 PHONE: (850) 434-2661

CERTIFICATION OF REGISTRATION NO. 1204  
 MECHANICAL ENGINEER DONALD W. YONGE, P.E. FLORIDA REG. NO. 30208  
 MECHANICAL ENGINEER TERRY J. MITCHELL, P.E. FLORIDA REG. NO. 48792  
 ELECTRICAL ENGINEER ARNOLD T. YARGOISE, P.E. FLORIDA REG. NO. 7635

H. M. YONGE AND ASSOC. JOB# 21-174

THIS DRAWING IS THE PROPERTY OF JENKINS ENGINEERING, INC. AND IS NOT TO BE REPRODUCED WITHOUT EXPRESSED WRITTEN CONSENT



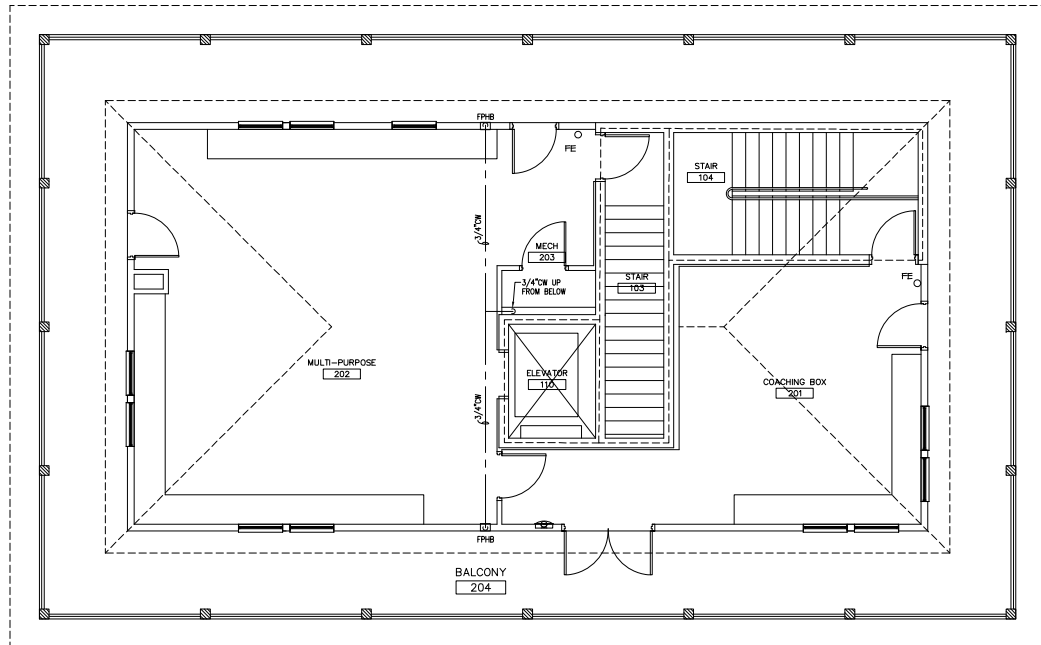
1  
P2.1



PLUMBING RESTROOM BUILDING FIRST FLOOR WATER PIPING PLAN  
SCALE: 1/4" = 1'-0"

PLUMBING KEY NOTES:

- 1 PROVIDE BUILDING SHUT-OFF VALVE 24" A.F.F. WITH HOSE BBB 8" ABOVE VALVE FOR SYSTEM DRAINING.



2  
P2.1



PLUMBING RESTROOM BUILDING SECOND FLOOR WATER PIPING PLAN  
SCALE: 1/4" = 1'-0"

THIS DRAWING IS THE PROPERTY OF JENKINS ENGINEERING, INC. AND IS NOT TO BE REPRODUCED WITHOUT EXPRESSED WRITTEN CONSENT



**JENKINS ENGINEERING, INC.**  
 1200 N. W. 13th Ave., Suite 120  
 Ft. Lauderdale, Florida 33304  
 Phone: 561.537.2448  
 Fax: 561.537.2440  
 jenkinsllc.com  
 C.O.A. NO. 9927



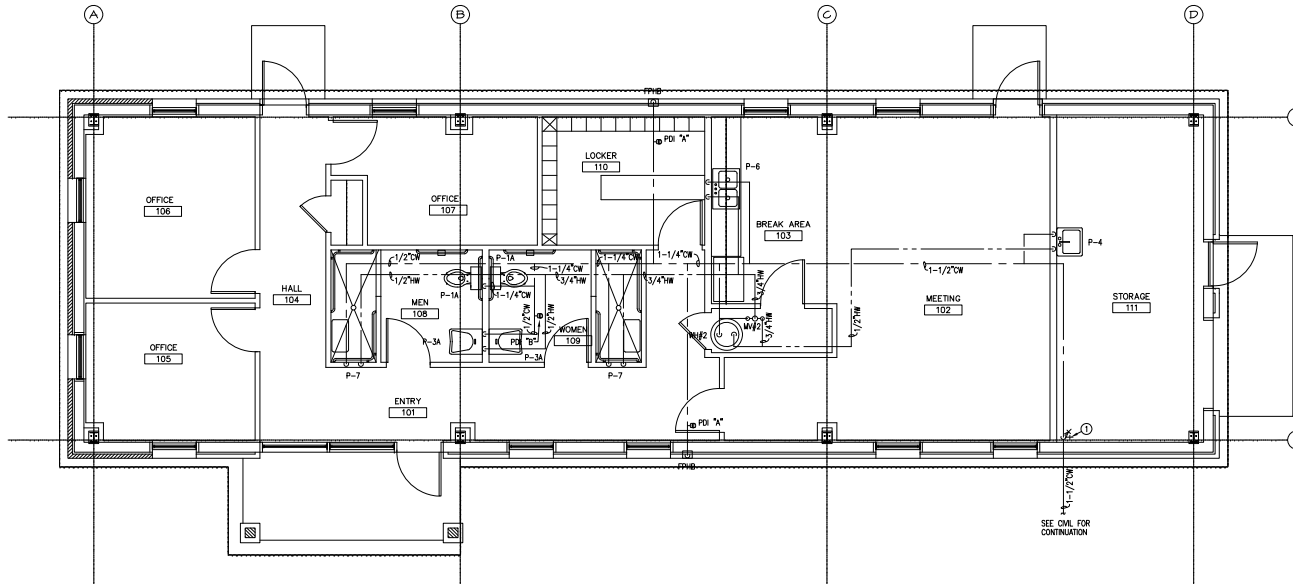
NO.	DATE	REVISION

**FT WALTON BEACH PARK**  
 HOLLYWOOD BLVD.  
 FT. WALTON BEACH • FLORIDA

JOB: 02/29/23  
 DATE: 02/29/23  
 DESIGNED: TJM  
 DRAWN: TJM

**H.M. YONGE & ASSOCIATES, INC.**  
 CONSULTING ENGINEERS, EST. 1988  
 51 EAST GREGORY STREET  
 FORT LAUDERDALE, FLORIDA 33302  
 PHONE: (954) 344-2661  
 CERTIFICATION OF REGISTRATION NO. 0204  
 MECHANICAL ENGINEER: H.M. YONGE, P.E., FLORIDA REG. NO. 92088  
 MECHANICAL ENGINEER: THOMAS J. PATCHEL, P.E., FLORIDA REG. NO. 48970  
 ELECTRICAL ENGINEER: ADAM T. VARGHESE, P.E., FLORIDA REG. NO. 76351  
 H. M. YONGE AND ASSOC. JOB# 21-174

NOT VALID UNLESS BEARING ORIGINAL SIGNATURE  
 DRAWING NUMBER  
 SHEET NUMBER  
**P2.1**



1  
P2.2  
NORTH  
PLUMBING RECREATION BUILDING WATER PIPING PLAN  
SCALE: 1/4" = 1'-0"



**JENKINS ENGINEERING, INC.**  
 1000 W. STATE ROAD 100, SUITE 100  
 DEERFIELD BEACH, FLORIDA 33441  
 PHONE: 888.837.2448  
 FAX: 888.837.2440  
 JENKINS.COM  
 C.O.A. NO. 9927



NO.	DATE	DESCRIPTION

**FT WALTON BEACH PARK**  
 HOLLYWOOD BLVD.  
 FT. WALTON BEACH • FLORIDA

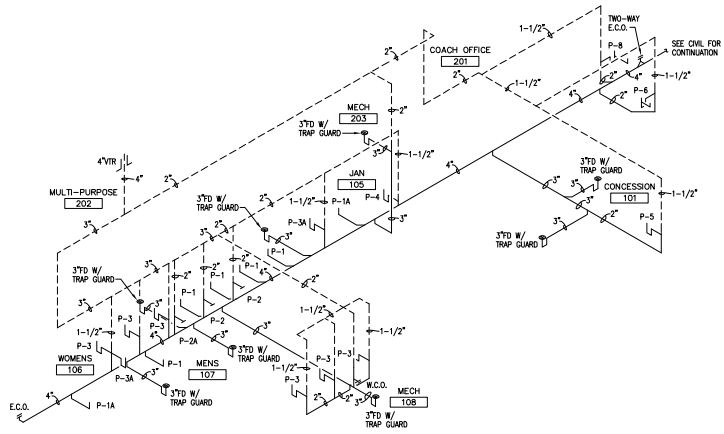
**JOB:** 02/29/23  
**DATE:** TJM  
**DESIGNED:** TJM  
**DRAWN:** TJM

THIS DRAWING HAS BEEN REPRODUCED AND SEALED BY  
 TIMOTHY J. MITCHELL, P.E., ON FEBRUARY 23, 2024.  
 PRINTED COPIES OF THIS DOCUMENT ARE NOT  
 CONSIDERED SEALED AND SEALED AND THE SIGNATURE  
 MUST BE VERIFIED ON ANY ELECTRONIC COPIES.

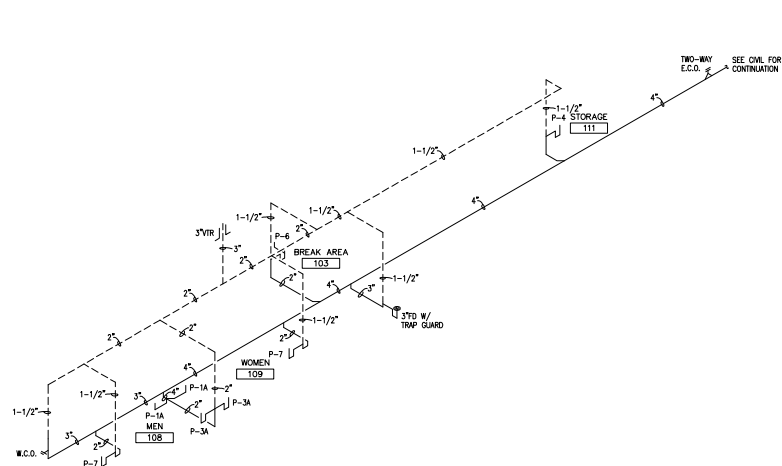
**H.M. YONGE & ASSOCIATES, INC.**  
 CONSULTING ENGINEERS, P.C. EST. 1988  
 51 EAST GREGORY STREET  
 PENSACOLA, FLORIDA 32502  
 PHONE: (850) 434-2661  
 CERTIFICATION OF REGISTRATION NO. 0204  
 MECHANICAL ENGINEER: H.M. YONGE, P.E., FLORIDA REG. NO. 30208  
 MECHANICAL ENGINEER: TIMOTHY J. MITCHELL, P.E., FLORIDA REG. NO. 98792  
 ELECTRICAL ENGINEER: ARNOLD T. VARGHESE, P.E., FLORIDA REG. NO. 7635  
 H. M. YONGE AND ASSOC. JOB# 21-174

THIS DRAWING IS THE PROPERTY OF JENKINS ENGINEERING, INC. AND IS NOT TO BE REPRODUCED WITHOUT EXPRESSED WRITTEN CONSENT

Path: M:\Users\mitchell\Documents\Projects\2023\23-02\23-02-001\23-02-001-001.dwg, 02/29/23, 09:57



RESTROOM BUILDING WASTE RISER DIAGRAM  
NOT TO SCALE



RECREATION BUILDING WASTE RISER DIAGRAM  
NOT TO SCALE



**JENKINS ENGINEERING, INC.**  
 1500 W. STATE ROAD 100 SUITE 100  
 DEERBURN, FLORIDA 32534  
 PHONE: 850.307.0488  
 FAX: 850.307.2460  
 JENKINS@JENKINS-ENGINEERING.COM  
 C.O.A. NO. 9927



NO.	DATE	REVISION

**FT WALTON BEACH PARK**  
 HOLLYWOOD BLVD.  
 FT. WALTON BEACH • FLORIDA

JOB: 02/29/23  
 DATE: TJM  
 DESIGNED: TJM  
 DRAWN: TJM

DRAWING NUMBER

SHEET NUMBER  
**P3.1**

THIS PDS HAS BEEN REPRODUCTION COPYED AND SEALED BY TRACY W. L. WARD, P.E., ON FEBRUARY 23, 2024.  
 PRINTED COPIES OF THIS DOCUMENT ARE NOT CONSIDERED SEALED AND SEALED AND THE SIGNATURE MUST BE VERIFIED ON ANY ELECTRONIC COPY.

**H.M. YONGE & ASSOCIATES, INC.**  
 CONSULTING ENGINEERS • EST. 1988  
 51 EAST GREGORY STREET  
 PANAMA CITY, FLORIDA 32362  
 PHONE: (850) 434-2661

CERTIFICATION OF REGISTRATION NO. 0204  
 MECHANICAL ENGINEER DONALD W. YONGE, P.E., FLORIDA REG. NO. 30288  
 MECHANICAL ENGINEER TERRY D. FITZELL, P.E., FLORIDA REG. NO. 48970  
 ELECTRICAL ENGINEER ARNOLD T. YARGOSE, P.E., FLORIDA REG. NO. 7635

H. M. YONGE AND ASSOC. JOB# 21-174

THIS DRAWING IS THE PROPERTY OF JENKINS ENGINEERING, INC. AND IS NOT TO BE REPRODUCED WITHOUT EXPRESSED WRITTEN CONSENT

SUMP PUMP SCHEDULE									
UNIT TAG	ELEVATOR SERVED	GPM	TOTL	MOTOR HP	DISCHARGE	CONTROL	TYPE	VOLTS	REMARKS
SP#1	ELEVATOR SHAFT	50	14"	0.5	2"	FLOAT SWITCH	SUBMERSIBLE	120 60 1 8.0	NOTES 1, 2

1. BASIS OF DESIGN - STANCOIL MINDER SEED THAT DOES NOT REQUIRE AN OIL HOLDING TANK.
2. PROVIDE WITH PUMP ON FLOAT, HIGH ALARM FLOAT, CONTROL PANEL AND POWER CABLE.

**PLUMBING SPECIFICATIONS:**

SEE PLUMBING FIXTURE CONNECTION SCHEDULE FOR FIXTURE SPECIFICATIONS.  
 HW AND CW PIPING SHALL BE TYPE L COPPER; MAXIMUM HANGER SPACING IS 6 FT.  
 FLOOR DRAINS SHALL BE EQUAL TO ZURN Z415 WITH BRONZE GRADE.  
 TRAP GUARDS/SEALS SHALL BE EQUAL TO ZURN Z1072.  
 WATER PIPING SHALL BE INSULATED WITH 1" THICK HIGH DENSITY FIBERGLASS PIPE INSULATION WITH AN ALL SERVICE JACKET. MAXIMUM FLOOR/SMOKE RATING IS 25/30.  
 WASTE AND VENT PIPING SHALL BE SCHEDULE 40 PVC (DWV). MAXIMUM HANGER SPACING IS 4 FT.

**PLUMBING CODES AND STANDARDS:**

FLORIDA BUILDING CODE - BUILDING (2023 ED WITH ALL SUPPLEMENTS)  
 FLORIDA BUILDING CODE - PLUMBING (2023 ED WITH ALL SUPPLEMENTS)  
 FAC 69M-3.012 - STANDARDS OF THE NFPA AND OTHER STANDARDS ADOPTED

PLUMBING FIXTURE CONNECTION SCHEDULE									
MARK	FIXTURE	CONNECTIONS				MAX. FIXTURE FLOW RATE	DESCRIPTION		
		WASTE	CW	HW (110°F)	HW (140°F)				
P-1	WATER CLOSET	4"	1"	---	---	1.6 (gpf)	KOHLER K-9653-S5 15-INCH HIGH TOP INLET WATER CLOSET WITH WHITE OPEN SEAT EQUAL TO CHURCH 255. FLUSH VALVE SHALL BE ZURN Z85000M-S-W51 HARD WIRED FLUSH VALVE WITH 1.6 GPF, SPLIT RING SUPPORT AND BUMPER ON ANGLE STOP.		
P-1A	WATER CLOSET (ADA)	4"	1"	---	---	1.6 (gpf)	KOHLER K-9657-S5 17-INCH HIGH TOP INLET WATER CLOSET WITH WHITE OPEN SEAT EQUAL TO CHURCH 255. FLUSH VALVE SHALL BE ZURN Z85000M-S-W51 HARD WIRED FLUSH VALVE WITH 1.6 GPF, SPLIT RING SUPPORT AND BUMPER ON ANGLE STOP.		
P-2	URINAL	2"	3/4"	---	---	1.0 (gpf)	KOHLER K-4904-ET TOP SPUD URINAL WITH ZURN Z856003M-S-W51 HARD WIRED FLUSH VALVE WITH 1.0 GPF FLOW. PROVIDE ZURN Z-1222 FLOOR SUPPORTED CARRIER.		
P-2A	URINAL (ADA)	2"	3/4"	---	---	1.0 (gpf)	KOHLER K-4904-ET TOP SPUD URINAL WITH ZURN Z856003M-S-W51 HARD WIRED FLUSH VALVE WITH 1.0 GPF FLOW. PROVIDE ZURN Z-1222 FLOOR SUPPORTED CARRIER. SEE ARCHITECTURAL FOR MOUNTING HEIGHT.		
P-3	LAVATORY (WALL HUNG)	1-1/2"	1/2"	---	---	0.5 (gpm)	KOHLER K-2005 21"x18" WALL MOUNTED SINK WITH ZURN Z8330-XL HARD WIRED AUTOMATIC FAUCET W/ 0.5 GPM VANDAL RESISTANT FLOW CONTROL AND DECK COVER PLATE. PROVIDE 1-1/2", 17-GAUGE TAIL PIECE WITH P-TRAP, FLEXIBLE SUPPLY AND QUARTER TURN WALL STOP. PROVIDE ZURN Z-1231 CARRIER.		
P-3A	LAVATORY (WALL HUNG, ADA)	1-1/2"	1/2"	---	---	0.5 (gpm)	KOHLER K-2005 21"x18" WALL MOUNTED SINK WITH ZURN Z8330-XL HARD WIRED AUTOMATIC FAUCET W/ 0.5 GPM VANDAL RESISTANT FLOW CONTROL AND DECK COVER PLATE. PROVIDE 1-1/2", 17-GAUGE TAIL PIECE WITH P-TRAP, FLEXIBLE SUPPLY AND QUARTER TURN WALL STOP. PROVIDE ZURN Z-1231 CARRIER.		
P-4	JANITOR SINK	3"	1/2"	---	1/2"	1.5 (gpm)	FBI TERRAZZO T83300 32"x22"x12" SINK WITH STAINLESS STEEL CURB CAPS. PROVIDE 14538B STRAINER, 3" P-TRAP AND 832M-A SERVICE FAUCET WITH VACUUM BREAKER, INTERNAL STOPS, PAL HOOK AND 832M HOSE/HOSE BRACKET. ALSO INCLUDE 889CC MOP HANGER BRACKET.		
P-5	COUNTER MOUNTED HAND SINK	1-1/2"	1/2"	1/2"	---	0.5 (gpm)	JUST SLX-2017-A-GR 20"x17"x10.5" DEEP STAINLESS STEEL SINK WITH T&S BRASS B-2685-4-122X RIGID GOODCHECK FAUCET WITH WRIST BLADES AND GRID STRAINER. PROVIDE 1-1/2", 17-GAUGE CHROME PLATED TAIL PIECE, P-TRAP, WALL STOPS AND FLEXIBLE SUPPLIES EQUAL TO EASTMAN.		
P-6	TWO-COMP. SINK	1-1/2"	1/2"	1/2"	---	0.5 (gpm)	JUST SLX-1933-A-GR 33"x19"x10.5" DEEP STAINLESS STEEL 2-COMPARTMENT SINK WITH JUST J-901 DECK MOUNTED FAUCET AND SPRAY. PROVIDE TWO JUST J-35 STRAINERS WITH DIRECT CONNECTION OUTLETS, 1-1/2", 17-GAUGE CHROME PLATED P-TRAP, WALL STOPS AND FLEXIBLE SUPPLIES EQUAL TO EASTMAN.		
P-7	SHOWER (ADA)	2"	1/2"	1/2"	---	1.5 (gpm)	SYMONDS 1-117-FS-1.5 PRESSURE BALANCING ANTI-SCALD SHOWER VALVE, SHOWER HEAD, DIVERter VALVE, HANDHELD SHOWER HEAD, 87 HOSE AND 2" IPS BRON WITH 5" SHOWER CHROME PLATED STRAINER EQUAL TO ZURN ZN-415.		
P-8	H/Low WATER COOLER (ADA & VANDAL RESIST.)	1-1/2"	1/2"	---	---	EXEMPT	HALSEY TAYLOR HTHB-HVR9RNB-L-WF HEAVY DUTY STAINLESS STEEL, VANDAL RESISTANT, H/Low WATER COOLER WITH BOTTLE FILLING STATION, PUSH BUTTONS, 1-1/2" WASTE ARM, STAINLESS STEEL APRON, VANDAL RESISTANT SCREW KIT AND ZURN Z1225-BL CARRIER SYSTEM.		
P-2	ICE MAKER VALVE BOX	---	3/4"	---	---	EXEMPT	GLY GRAY 88M75 VALVE BOX WITH 1/2" FIP INLET x 1/4" O.D. OUTLET COMPRESSION ANGLE VALVE.		

NOTE: ALL PLUMBING FIXTURES SHALL BE WHITE, UNLESS INDICATED OTHERWISE.  
 PLUMBING CONTRACTOR SHALL COORDINATE ALL PLUMBING FIXTURES AND ROUGH-IN REQUIREMENTS WITH EQUIPMENT SUPPLIER.

MIXING VALVE SCHEDULE						
MARK	INLET PIPE SIZE	OUTLET PIPE SIZE	DESIGN FLOW (GPM)	MAX. OPER. PRESS.	METERED TEMPERATURE	REMARKS
MV#1	1/2"	1/2"	1.0	5 PSI	87	NOTES 1, 2, 3
MV#2	1/2"	1/2"	1.0	5 PSI	87	NOTES 1, 2, 3

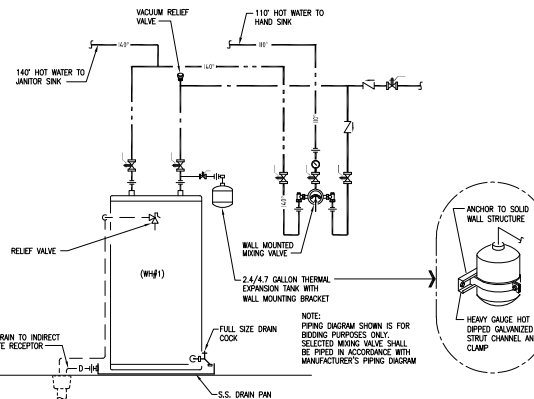
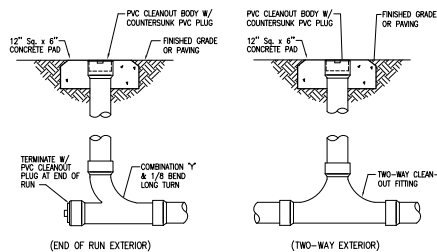
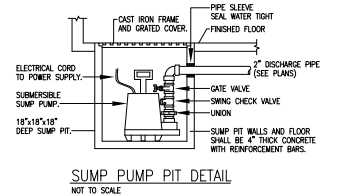
- NOTES:  
 1. MINIMUM FLOW SHALL BE 0.5 GPM.  
 2. CONTRACTOR SHALL PIPE VALVE PER SPECIFIC MANUFACTURER'S RECOMMENDATIONS.  
 3. MIXING VALVE SHALL FULLY COMPLY WITH ASSE 1070 STANDARD FOR TEMPERATURE CONTROL.

WATER HEATER SCHEDULE						
MARK	CAPACITY (GALLONS)	VOLTS	PHASE	Hz	KW	REMARKS
WH#1	40	208	1	60	4.5	NOTES 1, 2, 3
WH#2	40	208	1	60	4.5	NOTES 1, 2, 3

- NOTES:  
 1. TWO NON-SIMULTANEOUS HEATING ELEMENTS.  
 2. WATER HEATER SHALL BE ASHRAE 90.1-2013 COMPLIANT.  
 3. SET OUTLET TEMPERATURE TO 140°F.

PLUMBING LEGEND	
---	COLD WATER PIPING
---	HOT WATER RETURN
---	HOT WATER RETURN PIPING
---	WASTE PIPING
---	VENT PIPING
---	BALL VALVE
---	CHECK VALVE
---	BALANCING VALVE
---	P-TRAP
---	CONNECT NEW TO EXISTING
---	CLEANOUT
---	CW COLD WATER
---	ECO EXTERIOR CLEANOUT
---	EX EXISTING
---	FCD FLOOR CLEANOUT
---	FPHB FREEZE PROOF HOSE BIBB
---	HB HOSE BIBB
---	HW HOT WATER
---	HWR HOT WATER RETURN
---	MV MIXING VALVE
---	WCO WALL CLEANOUT
---	WH WATER HEATER

WATER HAMMER ARRESTOR			
PPP SIZE	FIXTURE UNITS	CROSS REF	NOTES
1/2"	1-11	A	
3/4"	12-32	B	
1"	33-60	C	
1-1/4"	61-113	D	
1-1/2"	114-154	E	
2"	155-330	F	



THIS DRAWING HAS BEEN HERETOFORELY REPRODUCED AND SEALED BY THE STATE OF FLORIDA REGISTERED PROFESSIONAL ENGINEER TUM JLM  
 PRINTED COPIES OF THIS DOCUMENT ARE NOT CONSIDERED VALID UNLESS SIGNED AND SEALED AND THE SIGNATURE IS NOT REPRODUCED OR NOT ELECTRONICALLY COPIED.

**H.M. YONGE & ASSOCIATES, INC.**  
 CONSULTING ENGINEERS • EST. 1989  
 51 EAST GREGORY STREET  
 PENSACOLA, FLORIDA 32502  
 PHONE: (850)434-2661

CERTIFICATION OF REGISTERED PROFESSIONAL ENGINEER  
 MECHANICAL ENGINEER CHARLES H. YONGE, P.E. FLORIDA REG. NO. 30288  
 MECHANICAL ENGINEER THOMAS J. PATCHEL, P.E. FLORIDA REG. NO. 48792  
 ELECTRICAL ENGINEER ARNOLD T. YARGOSE, P.E. FLORIDA REG. NO. 76391

DATE: 02/29/23  
 DESIGNED: TUM  
 DRAWING: JLM

IF ANY ONE INCH ON THIS SHEET IS NOT TO SCALE, ADJUST ALL OTHER SCALES ACCORDINGLY.

DRAWING NUMBER: \_\_\_\_\_  
 SHEET NUMBER: P4.1

**JENKINS ENGINEERING, INC.**  
 1500 W. WALTON BEACH BLVD., SUITE 120  
 WALTON BEACH, FLORIDA 32587  
 PHONE: 850.837.0448  
 FAX: 850.837.2460

**JENKINS ENGINEERING, INC.**  
 1500 W. WALTON BEACH BLVD., SUITE 120  
 WALTON BEACH, FLORIDA 32587  
 PHONE: 850.837.0448  
 FAX: 850.837.2460

**FT WALTON BEACH PARK**  
 HOLLYWOOD BLVD.,  
 FT. WALTON BEACH, FLORIDA

THIS DRAWING IS THE PROPERTY OF JENKINS ENGINEERING, INC. AND IS NOT TO BE REPRODUCED WITHOUT EXPRESSED WRITTEN CONSENT.